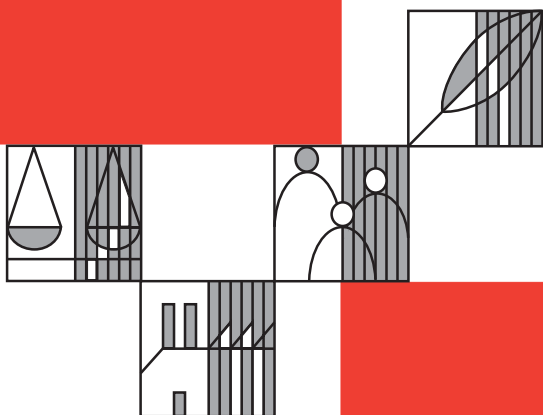


# South Tyrol in figures



**2006**

Autonomous Province  
of South Tyrol

Provincial Statistics  
Institute



**Source of data:**

Data was mainly taken from official statistics sources which are partly directly collected by the Provincial Statistics Institute (ASTAT) and partly acquired from various ISTAT publications.

The following public bodies also provided data: Provincial Hydrographic Department, Provincial Hospital Department, Local Education Authority, Bilingual Examination Secretariat, Chamber of Commerce, SIAE, Provincial Employment Office, Provincial Agricultural Division, Provincial Forestry Division, Provincial Department of Industry, ENEL, Provincial Cablecar Department, Telecom, RAI, Banca d'Italia, Autonomous Province of Trento.

ASTAT accepts full responsibility for the data and its evaluation.

**© Copyright:**

Autonomous Province of South Tyrol  
Provincial Statistics Institute - ASTAT

Bozen / Bolzano 2006

**Orders are available from:**

ASTAT  
Viale Duca d'Aosta Allee 59  
I-39100 Bozen / Bolzano  
Tel. (0471) 414000  
Fax (0471) 414008

E-mail: [astat@provinz.bz.it](mailto:astat@provinz.bz.it)  
E-mail: [astat@provincia.bz.it](mailto:astat@provincia.bz.it)

*Reproduction and reprinting of tables and charts, even partial, is only allowed if the source is cited (title and publisher).*

**Editor:** Gobbi Gregorio

**Translation:** Logiudice Sonja

**Layout and graphics:** Lantschner Raimund  
Stauder Renata



**Territory and environment**

1	Surface area by altitude	6
2	Municipalities grouped by surface area 2005	6
3	Surface area by land use 2000	7
4	Climate 2005	7



**Population and society**

5	Demographic development in South Tyrol and in its main urban centres 1754-2001	8
6	Surface area, resident population and population density in South Tyrolean districts - 31.12.2005	9
7	Resident population of the municipalities and districts in 2005, 2001 and 1991	10
8	Municipalities and resident population by population size groups - 31.12.2005	14
9	Declarations of which language group belong to/affiliated to - Population Census 2001	15
10	Percentage composition of the three official language groups (based on the declarations made during the Population Census 2001) by municipality	16
11	Resident population by language group according to the Population Censuses from 1880 to 2001	19
12	Natural population change 2003-2005	20
13	Average life expectancy at birth 1997-2001	20
14	Marriages, separations and divorces 2003-2005	21
15	Immigration and emigration by source and destination area 2003	22
16	Households by number of members 2001 and 2005	23
17	Deaths by causes of death 2004	23
18	Hospitals, number and bed utilisation rate 2005	24
19	Legally induced abortions 2003-2005	24
20	Suicides 2000-2004	24
21	Schools: number of classes and enrolled students by teaching language - School year 2005/06	25
22	Resident population aged 14 and over by sex and educational level 1991 and 2001	26
23	Tests of bilingual ability by sex and test level 1978-2005	26

## CONTENTS

	Page
24	Cultural events and others 1997-1999 27
25	Numbers employed by activity sector and sex 2005 27
26	Unemployment 2003-2005 28
27	Housing units - Population Census 1981, 1991 and 2001 29
28	Monthly household consumption by category 2005 30



## Economy and business

29	Local units and employees by activity sector - 1981, 1991 and 2001 31
30	Inflation rates in Bozen/Bolzano, Trento and Italy 2003-2005 32
31	Use and resources of goods and services 2002-2003 32
32	Gross and net value-added at basic prices and gross domestic product at market prices 2002-2003 33
33	Per capita values of some economic aggregates in South Tyrol and Italy 2002-2003 34
34	Farm holdings and holding surface area by land use 2000 35
35	Farm holdings and livestock population by livestock type 2000 35
36	Agricultural production by crop type 2003-2005 36
37	Wine grape harvest 2004-2005 36
38	Apple and pear harvest by variety 2004-2005 37
39	Forestry production by type of wood and utilisation 2003-2005 38
40	Mining production 2002-2004 38
41	Electricity production and consumption 2004-2005 39
42	Planning permission granted 2003-2005 39
43	Public works of local administration 2003-2005 40
44	Retail trade permits according to type of permit 1997-1998 40
45	Accommodation capacity, arrivals and overnight stays 2003-2005 41
46	Traffic network 2005 42
47	Vehicles liable to road tax 2005 42
48	Road accidents and people injured 2002-2004 43
49	Cableways by category 2003-2005 43
50	Telephone connections and television licences 44
51	Deposits, loans and banking counters 2003-2005 44



## Public administration and justice

52	Civil servants by administration 2004-2005	45
53	Consolidated expenditure of local public administration by functional classification 2003-2004	46
54	Declared bankruptcies by activity sector 2003-2005	47
55	Protests 2004-2005	47
56	Reported crimes leading to prosecution 2003	47

## Charts

1	Demographic development in South Tyrol and in its main urban centres 1869-2001	8
2	Birth rate, mortality rate and marriage rate 1950-2005	21
3	Migration balance by source and destination area 2003	22
4	Students of nursery, primary, lower and upper secondary schools - school years 1970/71-2005/06	25
5	Numbers employed by activity sector and sex 2005	28
6	Agricultural holdings by livestock type 2000	34
7	Apple and pear harvest 2005	37
8	Local administration civil servants 2005	45



Table 1

### Surface area by altitude

Altitude (metres above sea level)	Surface area	
	km <sup>2</sup>	%
Under 500	292.09	3.9
500 - 700	207.88	2.8
700 - 800	126.05	1.7
800 - 1,000	419.99	5.7
1,000 - 1,200	521.96	7.1
1,200 - 1,500	1,068.76	14.4
Over 1,500	4,763.70	64.4
<b>Total</b>	<b>7,400.43</b>	<b>100.0</b>

Table 2

### Municipalities grouped by surface area 2005

SURFACE AREA (km <sup>2</sup> )	Number of municipalities	Total surface area km <sup>2</sup>
Under 5	6	20.65
5 - 10	3	20.79
10 - 20	14	210.96
20 - 40	28	824.33
40 - 60	21	1,017.72
60 - 100	20	1,536.97
100 - 250	23	3,466.51
Over 250	1	302.50
<b>Total</b>	<b>116</b>	<b>7,400.43</b>



Table 3

### Surface area by land use 2000

TYPE OF LAND USE	Surface area	
	km <sup>2</sup>	%
Agricultural land in use	2,670	36.1
Forest	2,920	39.5
Agricultural and forest land not in use	145	2.0
Unproductive land	1,665	22.4
<b>Total</b>	<b>7,400</b>	<b>100.0</b>

Source: randomly based on the Census of Agriculture

Table 4

### Climate 2005

WEATHER STATIONS	Height above sea level m	Mean air temperature - °C		Rainfall		
		Normal	2005	Normal mm	2005 mm	2005 days
St.Valentin auf der Haide (Graun i.V.) S.Valentino alla Muta (Curon V.)	1,520	4.3	4.6	615.8	527.3	80
Naturns Naturno	554	10.2	10.2	515.3	428.8	60
St.Leonhard in Pass. S.Leonardo in Pass.	644	10.0	9.3	1.050.9	707.8	77
Meran Merano	333	11.3	11.8	708.1	449.6	67
Sterzing Vipiteno	948	7.9	8.0	780.2	506.2	71
St.Magdalena in Gsies S.Maddalena in Casies	1,398	6.5	3.7	865.3	896.4	104
Brixen Bressanone	560	9.7	10.7	675.5	572.4	79
Bozen Bolzano	254	12.2	12.6	719.8	515.0	64



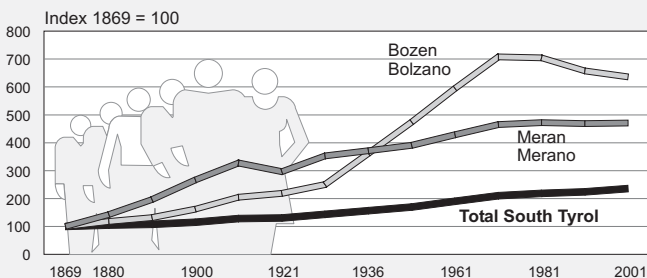
Table 5

**Demographic development in South Tyrol and in its main urban centres 1754-2001**

YEAR	Total South Tyrol	Bozen Bolzano	Meran Merano	Brixen Bressanone
1754	163,000	....	....	....
1837	183,727	10,499	....	....
1869	196,686	14,941	7,142	7,399
1880	205,306	17,441	9,812	7,849
1890	210,285	19,242	13,552	8,534
1900	222,793	23,521	18,544	8,882
1910	251,451	30,424	23,640	10,049
1921	256,610	32,679	21,177	10,424
1931	282,158	37,351	25,196	11,659
1936	298,290	45,505	25,611	11,242
1951	333,900	70,898	27,908	11,797
1961	373,863	88,799	30,614	13,456
1971	414,041	105,757	33,235	16,017
1981	430,568	105,180	33,711	16,101
1991	440,508	98,158	33,504	16,992
<b>2001</b>	<b>462,999</b>	<b>94,989</b>	<b>33,656</b>	<b>18,359</b>

Chart 1

**Demographic development in South Tyrol and in its main urban centres 1869-2001**



The Brixen index of demographic development corresponds approximately to that for the whole province of South Tyrol

Provincial Statistics Institute - 2006/sr





Table 6

**Surface area, resident population and population density in South Tyrolean districts - 31.12.2005**

	Surface area km <sup>2</sup>	Resident population (a)	Inhabitants per km <sup>2</sup>
<b>Districts</b>			
Vinschgau	1,441.68	35,043	24
Val Venosta			
Burggrafenamt	1,100.73	92,631	84
Burgraviato			
Überetsch-Südt. Unterland	423.60	67,860	160
Oltradige-Bassa Atesina			
Bozen	52.34	98,657	1,885
Bolzano			
Salten-Schlern	1,036.63	46,388	45
Salto-Sciliar			
Eisacktal	623.78	47,492	76
Valle Isarco			
Wipptal	650.01	18,430	28
Alta Valle Isarco			
Pustertal	2,071.66	76,149	37
Val Pusteria			
<b>Statistical areas</b>			
Meran-Schlanders	2,530.07	126,021	50
Merano-Silandro			
Bozen	1,588.96	218,747	138
Bolzano			
Brixen-Sterzing	1,320.27	64,938	49
Bressanone-Vipiteno			
Bruneck	1,961.13	72,944	37
Brunico			
<b>Ladin valleys</b>	<b>511.13</b>	<b>19,249</b>	<b>38</b>
<b>Total South Tyrol</b>	<b>7,400.43</b>	<b>482,650</b>	<b>65</b>



Table 7

## Resident population of the municipalities and districts in 2005, 2001 and 1991

MUNICIPALITIES	Resident population 31.12.2005	Resident population PC 2001	Resident population PC 1991
Abtei/Badia	3,195	3,015	2,722
Ahrntal/Valle Aurina	5,641	5,517	5,261
Aldein/Aldino	1,678	1,656	1,590
Algund/Lagundo	4,293	4,169	3,841
Altrei/Anterivo	394	387	395
Andrian/Andriano	914	794	758
Auer/Ora	3,389	3,022	2,637
Barbian/Barbiano	1,552	1,520	1,444
Bozen/Bolzano	98,657	94,989	98,158
Branzoll/Bronzolo	2,437	2,293	1,973
Brenner/Brennero	2,059	2,066	2,242
Brixen/Bressanone	19,504	18,359	16,992
Bruneck/Brunico	14,284	13,618	12,624
Burgstall/Postal	1,609	1,435	1,268
Corvara/Corvara i.B.	1,258	1,266	1,236
Deutschnofen/Nova Ponente	3,712	3,565	3,231
Enneberg/Marebbe/Mareo	2,804	2,682	2,574
Eppan a.d.W./Appiano s.s.d.v.	13,325	12,657	10,914
Feldthurns/Velturno	2,668	2,541	2,302
Franzensfeste/Fortezza	936	892	915
Freienfeld/Campo di Trens	2,583	2,458	2,383
Gais	3,058	2,865	2,537
Gargazon/Gargazzone	1,499	1,366	1,140
Glurns/Glorenza	882	883	795
Graun i.V./Curon V.	2,407	2,379	2,331
Gsies/Valle di Casies	2,151	2,098	2,008
Haflling/Avelengo	713	709	623
Innichen/S.Candido	3,138	3,107	3,073
Jenesien/S.Genesisio	2,839	2,703	2,353
Kaltem a.d.W./Caldaro s.s.d.v.	7,307	6,852	6,337
Karneid/Cornedo a.I.	3,249	3,113	2,764
Kastelbell-Tschars/Castelbello-Ciardes	2,331	2,328	2,317
Kastelruth/Castelrotto	6,247	5,994	5,600
Kiens/Chienes	2,686	2,641	2,476
Klausen/Chiusa	4,948	4,613	4,284
Kuens/Caines	344	318	304
Kurtatsch a.d.W./Cortaccia s.s.d.v.	2,181	2,085	1,812
Kurtinig a.d.W./Cortina s.s.d.v.	613	594	552
Laas/Lasa	3,799	3,700	3,514
Lajen/Laion	2,445	2,261	1,945



Table 7 - continued

**Resident population of the municipalities and districts in 2005, 2001 and 1991**

MUNICIPALITIES	Resident population 31.12.2005	Resident population PC 2001	Resident population PC 1991
Lana	10,458	9,759	8,631
Latsch/Laces	5,050	4,870	4,320
Laurein/Lauregno	366	361	346
Leifers/Laives	15,962	15,069	13,707
Lüsen/Luson	1,474	1,455	1,373
Mals/Malles	4,975	4,835	4,608
Margreid a.d. Weinstr./Magrè s.s.d.v.	1,195	1,181	1,002
Marling/Marlengo	2,305	2,197	2,041
Martell/Martello	885	891	845
Meran/Merano	35,602	33,656	33,504
Mölten/Meltina	1,517	1,447	1,214
Montan/Montagna	1,583	1,480	1,390
Moos i.P./Moso i.P.	2,181	2,170	2,171
Mühlbach/Rio di Pusteria	2,729	2,640	2,410
Mühlwald/Selva dei Molini	1,472	1,455	1,440
Nals/Nalles	1,653	1,577	1,413
Naturns/Naturno	5,201	5,089	4,535
Natz-Schabs/Naz-Sciaves	2,648	2,430	2,051
Neumarkt/Egna	4,648	4,339	4,013
Niederdorf/Villabassa	1,417	1,308	1,229
Olang/Valdaora	2,931	2,797	2,591
Partschins/Parcines	3,331	3,192	2,911
Percha/Perca	1,384	1,313	1,172
Pfalzen/Falzes	2,407	2,255	2,049
Pfatten/Vadena	912	842	707
Pfitsch/Val di Vizze	2,733	2,619	2,508
Plaus	601	547	380
Prad a.S.J./Prato a.S.	3,292	3,140	3,027
Prags/Braies	648	633	613
Prettau/Predoi	611	633	663
Proveis/Proves	274	288	298
Rasen-Antholz/Rasun Anterselva	2,795	2,700	2,506
Ratschings/Racines	4,172	4,010	3,594
Riffian/Rifiano	1,202	1,192	1,048
Ritten/Renon	7,147	6,993	6,101
Rodeneck/Rodengo	1,160	1,157	1,031
Salurn/Salorno	3,288	2,938	2,548
Sand in Taufers/Campo Tures	5,011	4,880	4,436
Sarnatal/Sarentino	6,691	6,620	6,324
Schenna/Scena	2,762	2,677	2,527



Table 7 - continued

## Resident population of the municipalities and districts in 2005, 2001 and 1991

MUNICIPALITIES	Resident population 31.12.2005	Resident population PC 2001	Resident population PC 1991
Schlanders/Silandro	5,908	5,733	5,366
Schluderns/Sluderno	1,846	1,848	1,718
Schnals/Senales	1,413	1,394	1,379
Sexten/Sesto	1,940	1,906	1,829
St.Christina i.G./S.Cristina V.G./S.Crestina	1,826	1,738	1,598
St.Leonhard i.P./S.Leonardo i.P.	3,411	3,437	3,330
St.Lorenzen/S.Lorenzo d.S.	3,567	3,438	3,085
St.Martin i.P./S.Martino i.P.	2,993	2,832	2,700
St.Martin i.T./S.Martino i.B./S.Martin de Tor	1,720	1,690	1,495
St.Pankraz/S.Pancrazio	1,582	1,608	1,620
St.Ulrich/Ortisei/Urtijëi	4,605	4,484	4,222
Sterzing/Vipiteno	5,947	5,785	5,596
Stilfs/Stelvio	1,279	1,310	1,323
Taufers im Münstertal/Tubre	976	949	952
Terenten/Terento	1,668	1,572	1,433
Terlan/Terlano	3,860	3,579	3,117
Tiers/Tires	938	884	834
Tirol/Tirolo	2,369	2,356	2,237
Tisens/Tesimo	1,831	1,809	1,721
Toblach/Dobbiaco	3,271	3,240	3,122
Tramin a.d.W./Termeno s.s.d.v.	3,198	3,193	2,963
Truden/Trodèna	976	957	946
Tscherms/Cermes	1,349	1,228	1,118
Ulten/Ultimo	2,983	3,006	2,945
U.L.Frau i.W.-St.Felix/Senale-S.Felice	823	787	709
Vahrn/Varna	3,866	3,577	3,269
Villanders/Villandro	1,854	1,830	1,748
Villnöß/Funes	2,452	2,379	2,309
Vintl/Vandòies	3,205	3,108	2,961
Völs a.S./Fiè a.S.	3,151	3,038	2,649
Vöran/Verano	896	880	795
Waidbruck/Ponte Gardena	192	181	210
Welsberg/Monguelfo	2,628	2,528	2,402
Welschnofen/Nova Levante	1,884	1,825	1,712
Wengen/La Valle/La Val	1,259	1,232	1,199
Wolkenstein i.G./Selva V.G./Sëlva	2,582	2,513	2,394
<b>Total South Tyrol</b>	<b>482,650</b>	<b>462,999</b>	<b>440,508</b>

PC = Population Census



Table 7 - continued

**Resident population of the municipalities and districts in 2005, 2001 and 1991**

	Resident population 31.12.2005	Resident population PC 2001	Resident population PC 1991
<b>Districts</b>			
Vinschgau			
Val Venosta	35,043	34,260	32,495
Burggrafenamt			
Burgraviato	92,631	88,645	84,156
Überetsch-Südt. Unterland			
Oltradige-Bassa Atesina	67,860	63,918	57,361
Bozen			
Bolzano	98,657	94,989	98,158
Salten-Schlern			
Salto-Sciliar	46,388	44,917	40,996
Eisacktal			
Valle Isarco	47,492	44,943	41,368
Wipptal			
Alta Valle Isarco	18,430	17,830	17,238
Pustertal			
Val Pusteria	76,149	73,497	68,736
<b>Statistical areas</b>			
Meran-Schlanders			
Merano-Silandro	126,021	121,328	115,238
Bozen			
Bolzano	218,747	209,363	201,527
Brixen-Sterzing			
Bressanone-Vipiteno	64,938	61,919	57,968
Bruneck			
Brunico	72,944	70,389	65,775
<b>Ladin valleys</b>	<b>19,249</b>	<b>18,620</b>	<b>17,440</b>
<b>Total South Tyrol</b>	<b>482,650</b>	<b>462,999</b>	<b>440,508</b>

PC = Population Census



Table 8

### Municipalities and resident population by population size groups - 31.12.2005

NUMBER OF INHABITANTS	Number of municipalities	Resident population	
		Number	%
Up to - 1,000	20	13,894	2.9
1,000 - 2,000	28	43,104	8.9
2,000 - 3,000	27	69,089	14.3
3,000 - 5,000	24	88,621	18.4
5,000 - 10,000	10	60,150	12.5
10,000 - 20,000	5	73,533	15.2
Meran/Merano	1	35,602	7.4
Bozen/Bolzano	1	98,657	20.4
<b>Total</b>	<b>116</b>	<b>482,650</b>	<b>100.0</b>



Table 9

### Declarations of which language group belong to/affiliated to - Population Census 2001

LANGUAGE GROUPS	Declarations of which language group belong to	Declarations of which language group affiliated to	Total Valid Declarations
Absolute values			
Italian	110,206	3,288	113,494
German	290,774	5,687	296,461
Ladin	18,124	612	18,736
<b>Total</b>	<b>419,104</b>	<b>9,587</b>	<b>428,691</b>
Percentage composition by type of declaration			
Italian	97.10	2.90	100.00
German	98.08	1.92	100.00
Ladin	96.73	3.27	100.00
<b>Total</b>	<b>97.76</b>	<b>2.24</b>	<b>100.00</b>
Percentage composition by language group			
Italian	26.30	34.30	26.47
German	69.38	59.32	69.15
Ladin	4.32	6.38	4.37
<b>Total</b>	<b>100.00</b>	<b>100.00</b>	<b>100.00</b>



Table 10

**Percentage composition of the three official language groups (based on the declarations made during the Population Census 2001) by municipality**

MUNICIPALITIES	Percentage composition		
	Italian	German	Ladin
Abtei/Badia	3.88	2.69	93.43
Ahrntal/Valle Aurina	1.07	98.79	0.13
Aldein/Aldino	1.37	98.38	0.25
Algund/Lagundo	12.93	86.81	0.26
Altrei/Anterivo	8.56	91.44	0.00
Andrian/Andriano	2.55	97.32	0.13
Auer/Ora	29.84	69.91	0.25
Barbian/Barbiano	2.02	97.47	0.51
Bozen/Bolzano	73.00	26.29	0.71
Branzoll/Bronzolo	59.85	39.68	0.47
Brenner/Brennero	20.29	79.39	0.31
Brixen/Bressanone	25.65	73.13	1.23
Bruneck/Brunico	14.91	83.14	1.95
Burgstall/Postal	25.64	73.99	0.37
Corvara/Corvara i.B.	4.42	4.58	91.00
Deutschnofen/Nova Ponente	2.51	97.10	0.39
Enneberg/Marebbe/Mareo	2.75	3.95	93.30
Eppan a.d.W./Appiano s.s.d.v.	12.47	87.16	0.37
Feldthurns/Velturno	0.89	98.56	0.55
Franzensfeste/Fortezza	40.69	57.82	1.49
Freienfeld/Campo di Trens	3.30	96.22	0.48
Gais	3.09	96.68	0.22
Gargazon/Gargazzone	21.32	78.22	0.46
Glurns/Glorenza	3.37	96.51	0.12
Graun i.V./Curon V.	2.33	97.67	0.00
Gsies/Valle di Casies	1.43	98.47	0.10
Hafling/Avelengo	2.33	97.67	0.00
Innichen/S.Candido	14.78	84.84	0.38
Jenesien/S.Genesio	2.59	97.29	0.12
Kaltern a.d.W./Caldaro s.s.d.v.	6.64	93.06	0.30
Karneid/Cornedo a.I.	12.38	87.27	0.34
Kastelbell-Tschars/Castelbello-Ciardes	1.05	98.86	0.09
Kastelruth/Castelrotto	3.43	81.83	14.74
Kiens/Chienes	2.41	96.82	0.77
Klausen/Chiusa	8.29	91.11	0.60
Kuens/Caines	2.90	97.10	0.00
Kurtatsch a.d.W./Cortaccia s.s.d.v.	3.44	96.21	0.35
Kurtinig a.d.W./Cortina s.s.d.v.	30.55	68.92	0.53
Laas/Lasa	2.29	97.54	0.17
Lajen/Laion	5.34	90.82	3.84





Table 10 - continued

**Percentage composition of the three official language groups (based on the declarations made during the Population Census 2001) by municipality**

MUNICIPALITIES	Percentage composition		
	Italian	German	Ladin
Lana	7.91	91.80	0.29
Latsch/Laces	2.61	97.32	0.07
Laurein/Lauregno	0.28	99.72	0.00
Leifers/Laives	70.42	29.07	0.51
Lüsen/Luson	0.83	98.95	0.23
Mals/Malles V.	3.08	96.83	0.09
Margreid a.d.W./Magrè s.s.d.v.	15.96	83.49	0.56
Marling/Marlengo	11.26	88.50	0.24
Martell/Martello	0.70	99.30	0.00
Meran/Merano	48.01	51.50	0.49
Mölden/Meltina	2.77	97.09	0.15
Montan/Montagna	6.04	93.82	0.15
Moos i.P./Moso i.P.	0.91	99.09	0.00
Mühlbach/Rio di Pusteria	4.03	95.31	0.66
Mühlwald/Selva dei Molini	0.73	99.19	0.07
Nals/Nalles	5.05	94.62	0.33
Naturns/Naturno	2.89	97.07	0.04
Natz-Schabs/Naz-Sciaves	5.39	93.62	0.99
Neumarkt/Egna	37.97	61.65	0.37
Niederdorf/Villabassa	6.68	93.32	0.00
Olang/Valdaora	2.16	97.42	0.42
Partschins/Parcines	2.96	96.97	0.07
Percha/Perca	2.54	96.82	0.64
Pfalzen/Falzes	1.78	97.31	0.91
Pfatten/Vadana	57.09	42.40	0.51
Pfitsch/Val di Vizze	9.29	90.38	0.33
Plaus	0.99	99.01	0.00
Prad a.S.J./Prato a.S.	2.90	96.93	0.17
Prags/Braies	2.79	96.89	0.33
Prettau/Predoi	1.30	98.70	0.00
Proveis/Proves	2.16	97.84	0.00
Rasen-Antholz/Rasun Anterselva	2.31	97.50	0.20
Ratschings/Racines	1.53	98.44	0.03
Riffian/Rifiano	1.08	98.92	0.00
Ritten/Renon	3.77	95.96	0.26
Rodeneck/Rodengo	0.18	99.64	0.18
Salurn/Salorno	62.19	37.43	0.39
Sand in Taufers/Campo Tures	2.94	96.72	0.33
Sarntal/Sarentino	1.45	98.44	0.11
Schenna/Scena	2.49	97.31	0.20



Table 10 - continued

### Percentage composition of the three official language groups (based on the declarations made during the Population Census 2001) by municipality

MUNICIPALITIES	Percentage composition		
	Italian	German	Ladin
Schlanders/Silandro	5.81	94.02	0.17
Schluderns/Sluderno	2.18	97.82	0.00
Schnals/Senales	2.71	97.29	0.00
Sexten/Sesto	3.20	96.58	0.22
St.Christina i.G./S.Cristina V.G./S.Crestina	3.12	5.68	91.20
St.Leonhard i.P./S.Leonardo i.P.	1.61	98.30	0.09
St.Lorenzen/S.Lorenzo d.S.	2.04	96.63	1.34
St.Martin i.P./S.Martino i.P.	1.23	98.74	0.04
St.Martin i.T./S.Mart. i.B./S.Martin de Tor	1.06	1.68	97.27
St.Pankraz/S.Pancrazio	0.13	99.81	0.06
St.Ulrich/Ortisei/Urtijëi	5.55	12.13	82.32
Sterzing/Vipiteno	24.29	75.28	0.44
Stilfs/Stelvio	2.26	97.66	0.08
Taufers im Münstertal/Tubre	4.58	95.42	0.00
Terenten/Terento	0.53	99.41	0.07
Terlan/Terlano	13.09	86.62	0.30
Tiers/Tires	2.35	97.40	0.25
Tirol/Tirolo	2.13	97.69	0.18
Tisens/Tesimo	1.35	98.47	0.18
Toblach/Dobbiaco	13.65	86.28	0.07
Tramin a.d.W./Termeno s.s.d.v.	3.20	96.64	0.17
Truden/Trodèna	20.73	78.58	0.69
Tscherms/Cermes	4.37	95.54	0.09
Ulten/Ultimo	0.85	99.15	0.00
U.L.Frau i.W.-St.Felix/Senale-S.Felice	2.22	97.78	0.00
Vahrn/Varna	11.17	87.86	0.97
Villanders/Villandro	1.37	98.29	0.34
Villnöß/Funes	0.93	98.72	0.35
Vintl/Vandòies	1.89	97.91	0.20
Völs a.S./Fiè a.S.	3.99	95.56	0.45
Vöran/Verano	0.59	98.93	0.47
Waidbruck/Ponte Gardena	8.70	90.68	0.62
Welsberg/Monguelfo	3.81	95.94	0.25
Welschnofen/Nova Levante	3.45	96.19	0.36
Wengen/La Valle/La Val	0.58	1.75	97.67
Wolkenstein i.G./Selva V.G./Sëlva	6.18	5.97	87.84
<b>Total South Tyrol</b>	<b>26.47</b>	<b>69.15</b>	<b>4.37</b>



Table 11

**Resident population by language group according to the Population Censuses from 1880 to 2001 (a)**

YEAR	Germans	Italians	Ladins	Others (b)	Total
Absolute values					
1880	186,087	6,884	8,822	3,513	205,306
1890	187,100	9,369	8,954	4,862	210,285
1900	197,822	8,916	8,907	7,149	222,794
1910	223,913	7,339	9,429	10,770	251,451
1921	193,271	27,048	9,910	24,506	254,735
1961	232,717	128,271	12,594	281	373,863
1971	260,351	137,759	15,456	475	414,041
1981	279,544	123,695	17,736	9,593	430,568
1991	287,503	116,914	18,434	17,657	440,508
<b>2001</b>	<b>296,461</b>	<b>113,494</b>	<b>18,736</b>	<b>34,308</b>	<b>462,999</b>
Percentage composition					
1880	90.6	3.4	4.3	1.7	100.0
1890	89.0	4.5	4.3	2.3	100.0
1900	88.8	4.0	4.0	3.2	100.0
1910	89.0	2.9	3.8	4.3	100.0
1921	75.9	10.6	3.9	9.6	100.0
1961	62.2	34.3	3.4	0.1	100.0
1971	62.9	33.3	3.7	0.1	100.0
1981	64.9	28.7	4.1	2.2	100.0
1991	65.3	26.5	4.2	4.0	100.0
<b>2001</b>	<b>64.0</b>	<b>24.5</b>	<b>4.0</b>	<b>7.4</b>	<b>100.0</b>

(a) Figures up to 1921 refer to the present population, whereas those of 1961, 1971 and 1981 are based on the resident population and those of 1991 as well as 2001 on the language group declarations. The language analysed up to 1961 is the commonly spoken one, from 1971 to 1981 it was the declaration of which language group they belonged to and in 1991 as well as 2001 the declaration of which language group they belonged to or were affiliated to.

(b) The voice "others" contains different population groups according to the year:  
 1880: the "locals" with a different commonly spoken language and the "non locals"; the same is true for 1890 and 1900;  
 1910: Italian citizens with a different commonly spoken language and non Italian citizens;  
 1921: foreigners;  
 1961: all residents with a different commonly spoken language;  
 1971: all residents, who did not declare which language group they belonged to;  
 1981: resident Italian citizens without any valid language group declaration, as well as resident foreigners;  
 1991: invalid declarations, people temporarily absent and resident foreigners; the same applies to 2001

Source: ISTAT, Österreichisches Statistisches Zentralamt, elaborated by ASTAT



Table 12

### Natural population change 2003-2005

	2003	2004	2005
<b>Live births</b>	<b>5,388</b>	<b>5,450</b>	<b>5,525</b>
per 1,000 inhabitants			
South Tyrol	11.5	11.5	11.5
Province of Trento	10.2	11.0	10.4
Italy	9.4	9.7	9.5
<b>Stillbirths (a)</b>	<b>16</b>	<b>15</b>	<b>11</b>
per 1,000 births			
South Tyrol	3.1	3.0	2.1
Province of Trento	2.6	3.0	....
Italy	3.1	3.1	....
<b>Deaths</b>	<b>3,939</b>	<b>3,761</b>	<b>3,799</b>
per 1,000 inhabitants			
South Tyrol	8.4	7.9	7.9
Province of Trento	9.5	9.1	8.9
Italy	10.2	9.4	9.7
<b>Infant deaths within 1<sup>st</sup> year of life (a)</b>	<b>14</b>	<b>20</b>	<b>17</b>
per 1,000 live births			
South Tyrol	2.8	3.9	3.3
Province of Trento	3.0	2.6	....
Italy	4.2	....	....
<b>Marriages (a)</b>	<b>1,899</b>	<b>1,855</b>	<b>1,839</b>
per 1,000 inhabitants			
South Tyrol	4.0	3.9	3.8
Province of Trento	4.2	3.8	3.8
Italy	4.5	4.3	4.3

(a) Present population

Table 13

### Average life expectancy at birth 1997-2001 Years

	Males	Females
South Tyrol	77.0	83.4
Italy (1999)	76.0	82.1



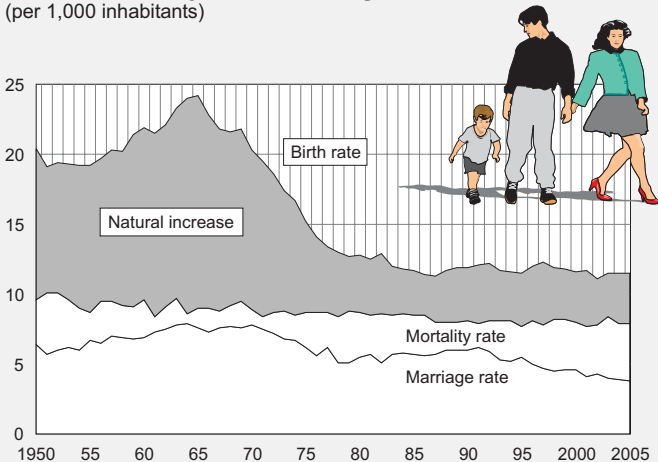
Table 14

**Marriages, separations and divorces 2003-2005**

	2003	2004	2005
<b>Marriages</b>	<b>1,899</b>	<b>1,855</b>	<b>1,839</b>
<b>Legal separations</b>	<b>641</b>	<b>660</b>	<b>821</b>
per 10,000 inhabitants			
South Tyrol	13.7	13.9	17.1
Province of Trento	16.0	16.4	....
Italy	14.2	14.3	....
<b>Divorces</b>	<b>368</b>	<b>419</b>	<b>468</b>
per 10,000 inhabitants			
South Tyrol	7.8	8.8	9.8
Province of Trento	8.6	9.6	....
Italy	7.6	7.8	....

Chart 2

**Birth rate, mortality rate and marriage rate 1950-2005**  
(per 1,000 inhabitants)



Provincial Statistics Institute - 2006/sr



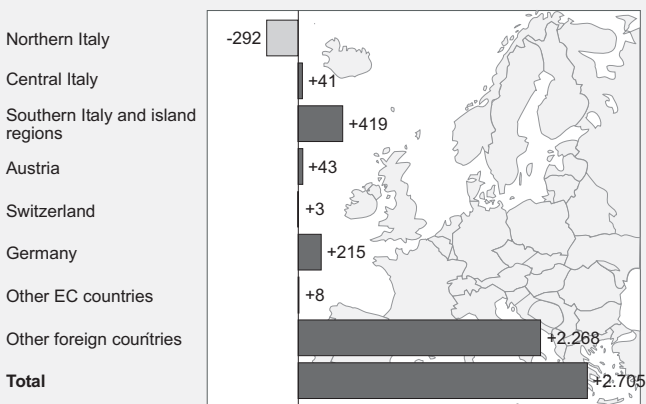
Table 15

**Immigration and emigration by source and destination area 2003**

SOURCE AND DESTINATION AREA	Immigration	Emigration	Balance
Another South Tyrolean municipality	7,393	7,393	-
Northern Italy (exluding South Tyrol)	975	1,267	- 292
Central Italy	291	250	+ 41
Southern Italy and island regions	767	348	+ 419
Austria	77	34	+ 43
Switzerland	107	104	+ 3
Germany	440	225	+ 215
Other EC countries	142	134	+ 8
Other foreign countries	3,326	1,058	+ 2,268
<b>Total</b>	<b>13,518</b>	<b>10,813</b>	<b>+ 2,705</b>
<i>of which from abroad</i>	<i>4,092</i>	<i>1,555</i>	<i>+2,537</i>

Chart 3

**Migration balance by source and destination area 2003**



Provincial Statistics Institute - 2006/sr



Table 16

## Households by number of members 2001 and 2005

Nº OF HOUSEHOLDS MEMBERS	PC 2001	31.12.2005	2001-2005 change in %
1	50,806	62,359	+ 22.7
2	40,761	44,113	+ 8.2
3	31,771	32,660	+ 2.8
4	31,944	32,605	+ 2.1
5	12,624	12,343	- 2.2
6	3,912	3,679	- 6.0
7 and over			
- Households	2,096	1,776	- 15.3
- Members	15,977	13,478	- 15.6
<b>Total</b>			
Households	173,914	189,535	+ 9.0
Members	457,986	476,252	+ 4.0

PC = Population Census

Table 17

## Deaths by causes of death 2004

DISEASES	Number	%	per 100,000 inhabitants
Infectious and parasite diseases	30	0.8	6.3
Tumours	1,226	31.7	258.5
Psychiatric disorders and those of the nervous system and sensory organs	135	3.5	28.5
Circulatory system diseases	1,628	42.1	343.2
Respiratory system diseases	288	7.5	60.7
Digestive organ diseases	112	2.9	23.6
Other, and badly defined diseases	244	6.3	51.5
Injuries and poisoning	202	5.2	42.6
<b>Total</b>	<b>3,865</b>	<b>100.0</b>	<b>814.8</b>



Table 18

**Hospitals, number and bed utilisation rate 2005**

	Public	Private	Total
Hospitals	7	7	14
Beds	2,046	413	2,459
<i>per 1,000 inhabitants</i>	4.3	0.9	5.1
Mean utilisation of beds (%)	68.4	53.4	67.1

Table 19

**Legally induced abortions 2003-2005**

	2003	2004	2005
<b>Number</b>	<b>525</b>	<b>582</b>	<b>588</b>
per 1,000 live births			
South Tyrol	103.4	114.8	114.0
Province of Trento	243.8	245.3	....
Italy	230.1	241.8	....
<b>Abortion rate (a)</b>			
South Tyrol	4.6	5.1	5.1
Province of Trento	10.7	11.5	....
Italy	9.0	9.6	....

(a) Abortions per 1,000 women in fertile age (range 15-49 years)

Table 20

**Suicides 2000-2004**

	2000	2001	2002	2003	2004
Males	44	47	53	32	43
Females	10	12	7	14	17
<b>Total</b>	<b>54</b>	<b>59</b>	<b>60</b>	<b>46</b>	<b>60</b>
per 100,000 inhabitants					
South Tyrol	11.6	12.6	12.8	9.7	12.7
Province of Trento	6.7	7.1	8.5	....	....
Italy	5.4	4.9	5.1	....	....





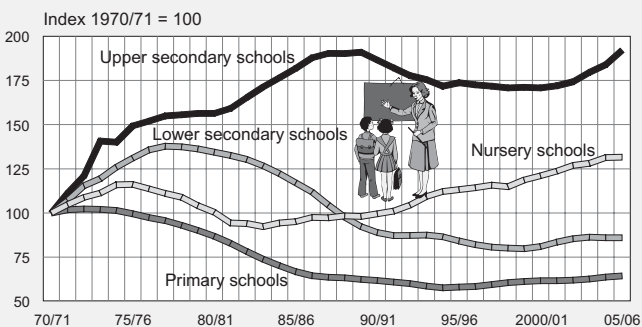
Table 21

**Schools: number of classes and enrolled students by teaching language - School year 2005/2006**

	German	Italian	Ladin	Total
<b>Nursery school</b>				
Enrolments	10,800	3,456	702	14,958
Classes	539	176	35	750
<b>Primary school</b>				
Enrolments	20,910	5,520	1,431	27,861
Classes	1,734	346	102	2,182
<b>Lower secondary school</b>				
Enrolments	12,629	3,340	737	16,706
Classes	634	173	38	845
<b>Upper secondary school</b>				
Enrolments	12,088	4,885	287	18,260
Classes	673	318	29	1,020

Chart 4

**Students of nursery, primary, lower and upper secondary schools - school years 1970/71-2005/06**



Provincial Statistics Institute - 2006/sr



Table 22

**Resident population aged 14 and over by sex and educational level 1991 and 2001**

Percentage composition

	University degree	Upper secondary certificate	Lower secondary certificate	Primary school certificate	Total (a)
Population Census 1991					
Males	4,3	18,3	45,2	30,5	100,0
Females	2,2	20,1	38,4	37,1	100,0
<b>Total</b>	<b>3,2</b>	<b>19,2</b>	<b>41,7</b>	<b>33,9</b>	<b>100,0</b>
Population Census 2001					
Males	5.8	24.6	45.7	22.3	100.0
Females	4.3	28.4	37.4	28.1	100.0
<b>Total</b>	<b>5.0</b>	<b>26.6</b>	<b>41.4</b>	<b>25.3</b>	<b>100.0</b>

(a) The total also includes persons without any qualifications

Table 23

**Tests of bilingual ability by sex and test level 1978-2005**

	No of candidates who passed		Percentage of candidates who passed (a)	
	2005	1978-2005	2005	1978-2005
<b>Sex</b>				
Males	1,742	....	45.8	....
Females	2,680	....	45.9	....
<b>Levels</b>				
Level A	1,168	25,173	55.0	35.8
Level B	1,071	36,324	28.1	27.1
Level C	792	48,133	39.3	38.9
Level D	1,391	58,064	82.4	80.5
<b>Total</b>	<b>4,422</b>	<b>167,694</b>	<b>45.9</b>	<b>41.9</b>

(a) Percentage of candidates passing the tests based on total number of candidates



Table 24

## Cultural events and others 1997-1999

	1997	1998	1999
<b>Expenditure by spectators (thousands of euro)</b>			
Theatre and music	4,739	4,574	4,212
Cinema	2,518	2,830	2,447
Other leisure	13,966	15,504	17,247
Sports events	1,378	1,718	1,350
<b>Total</b>	<b>22,602</b>	<b>24,625</b>	<b>25,256</b>
<b>Mean expenditure per inhabitant (euro)</b>			
South Tyrol	49.74	53.70	54.77
Province of Trento	35.12	41.26	39.50
Italy	42.97	46.96	49.11
<b>Events</b>			
Prose	1,543	2,101	1,550
Classical music	393	472	475
Pop music	574	536	553
Other	134	176	182
<b>Total</b>	<b>2,644</b>	<b>3,285</b>	<b>2,760</b>
<b>Tickets sold per event</b>	<b>481,508</b>	<b>471,989</b>	<b>571,727</b>
	182	144	207
<b>Cinema activities</b>			
Number of cinemas	41	53	46
Number of days films shown	5,582	5,368	5,174
Tickets sold	466,665	519,818	450,891

Table 25

## Numbers employed by activity sector and sex 2005

ACTIVITY SECTORS	Males	Females	Total	%
Agriculture	11,900	5,500	17,400	7.8
Industry	46,000	8,100	54,100	24.2
Services	72,400	79,500	151,900	68.0
<b>Total employed persons</b>	<b>130,300</b>	<b>93,000</b>	<b>223,300</b>	<b>100.0</b>
<i>of which employees</i>	<i>87,800</i>	<i>72,600</i>	<i>160,400</i>	<i>71.8</i>

Source: Labour Force Sample Survey



Table 26

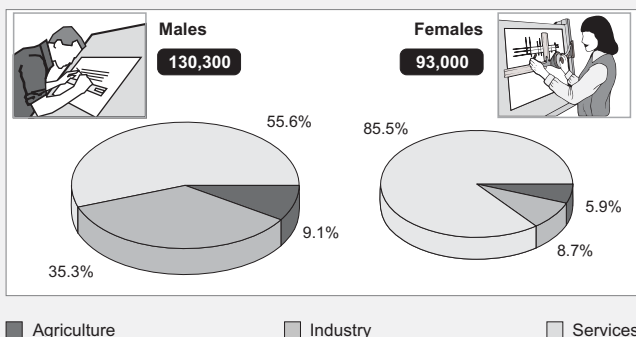
**Unemployment 2003-2005**  
Yearly average

	2003	2004	2005
<b>Job seekers</b>	<b>5,900</b>	<b>6,000</b>	<b>6,300</b>
Males	2,500	2,600	2,900
Females	3,500	3,400	3,400
<b>Unemployment rate (a)</b>	<b>2.6</b>	<b>2.7</b>	<b>2.8</b>
Males	1.9	2.0	2.2
Females	3.6	3.5	3.5
<b>Official unemployed persons</b>	<b>4,083</b>	<b>4,845</b>	<b>5,218</b>
Males	1,686	2,088	2,226
Females	2,398	2,757	2,992

(a) Ratio of job seekers to total labour force

Chart 5

**Numbers employed by activity sector and sex 2005**  
Yearly average - percentage composition



Provincial Statistics Institute - 2006/sr



Table 27

### Housing units - Population Census 1981, 1991 and 2001

	Occupied housing units	Other housing units	Other types of dwellings
1981	124,029	18,012	332
1991	144,661	22,012	298
2001	172,031	26,047	444

#### Population Census 2001

##### Districts

Vinschgau			
Val Venosta	11,628	1,289	21
Burggrafenamt			
Burgraviato	34,158	4,988	100
Überetsch-Südt. Unterland			
Oltradige-Bassa Atesina	24,266	2,387	34
Bozen			
Bolzano	40,964	1,594	103
Salten-Schlern			
Salto-Sciliar	15,186	5,867	36
Eisacktal			
Valle Isarco	15,611	2,425	31
Wipptal			
Alta Valle Isarco	6,229	1,153	25
Pustertal			
Val Pusteria	23,989	6,344	94
<b>Total South Tyrol</b>	<b>172,031</b>	<b>26,047</b>	<b>444</b>



Table 28

### Monthly household consumption by category 2005

CATEGORIES OF CONSUMPTION	Average monthly expenditure (euro)		Percentage composition
	by household	by household member	
<b>Food</b>	<b>439.49</b>	<b>171.81</b>	<b>13.6</b>
<b>Non-food consumption</b>	<b>2,789.31</b>	<b>1,090.39</b>	<b>86.4</b>
Tobacco	17.45	6.82	0.5
Clothing and footwear	190.08	74.30	5.9
Housing	816.04	319.00	25.3
Combustibles and electricity	132.82	51.92	4.1
Furniture, household objects, utensils, domestic services	208.37	81.45	6.5
Medical care	137.26	53.66	4.3
Transport and communications	624.04	243.95	19.3
Recreation, leisure and education	209.37	81.85	6.5
Other commodities and services	453.87	177.43	14.1
<b>Total</b>	<b>3,228.81</b>	<b>1,262.19</b>	<b>100.0</b>



Table 29

### Local units and employees by activity sector - 1981, 1991 and 2001

	1981	1991	2001
Local units			
Agriculture and fishery	130	108	432
Mining	66	63	59
Manufacturing industry	4,254	4,205	4,437
Energy, gas and water	191	150	216
Building	3,417	4,116	5,356
Trade and repairs	9,660	9,109	10,340
Hotel and catering industry	11,810	12,405	9,646
Transport and communications	1,904	1,816	1,971
Banking and insurance	521	776	972
Other services	5,440	9,411	17,778
<b>Total</b>	<b>37,393</b>	<b>42,159</b>	<b>51,207</b>
Employees			
Agriculture and fishery	637	413	1,137
Mining	555	444	496
Manufacturing industry	31,843	32,711	35,525
Energy, gas and water	1,714	1,619	1,572
Building	16,753	16,565	21,158
Trade and repairs	32,024	33,401	35,285
Hotel and catering industry	31,597	30,143	27,242
Transport and communications	10,303	10,873	11,021
Banking and insurance	3,666	5,022	5,857
Other services	30,896	48,838	68,087
<b>Total</b>	<b>159,988</b>	<b>180,029</b>	<b>207,380</b>



Table 30

**Inflation rates in Bozen/Bolzano, Trento and Italy 2003-2005**

	2003	2004	2005
Bozen/Bolzano	2.5	1.7	1.7
Trento	2.2	1.8	1.6
Italy	2.5	2.0	1.7

Percentage variation of the mean consumer price index of households of workers and clerks compared to the year before

Table 31

**Use and resources of goods and services 2002-2003**

At current prices

AGGREGATES	2002	2003	
	Thousands of euro	Thousands of euro	%
<b>Resources</b>			
Gross domestic product at market prices	12,330,054	12,813,564	85.7
Net imports	2,035,817	2,142,434	14.3
<b>Total</b>	<b>14,365,871</b>	<b>14,955,998</b>	<b>100.0</b>
<b>Uses</b>			
Domestic final use	10,886,944	11,372,533	76.0
<i>Households</i>	8,166,394	8,599,828	56.8
<i>Non-profit institutions serving households</i>	59,600	61,745	0.4
<i>General government</i>	2,660,950	2,809,960	18.8
Gross fixed capital formation	3,466,090	3,563,723	23.8
Change in inventories	12,837	19,742	0.1
<b>Total</b>	<b>14,365,871</b>	<b>14,955,998</b>	<b>100.0</b>





Table 32

**Gross and net value-added at basic prices and gross domestic product at market prices 2002-2003**  
At current prices

ECONOMIC ACTIVITIES	2002	2003	
	Thousands of euro	Thousands of euro	%
<b>Agriculture and forestry</b>	<b>541,928</b>	<b>518,104</b>	<b>4.0</b>
<b>Industry</b>	<b>2,781,390</b>	<b>2,858,948</b>	<b>22.3</b>
<i>Mining and quarrying</i>	25,961	....	....
<i>Manufacturing industry</i>	1,685,005	1,716,886	13.4
<i>Energy supply</i>	134,502	....	....
Partial total	1,845,468	1,868,363	14.6
Building	935,922	990,585	7.7
<b>Services</b>	<b>8,118,424</b>	<b>8,507,390</b>	<b>66.4</b>
Sales, hotels, transport	3,552,124	3,722,155	29.0
<i>Hotel and catering industry</i>	1,688,130	....	....
Financial intermediation	2,292,247	2,434,184	19.0
Other services	2,274,053	2,351,051	18.3
<b>Gross value-added at basic prices</b> (including financial intermediation services indirectly measured)	<b>11,441,742</b>	<b>11,884,442</b>	<b>92.7</b>
Financial intermediation services (to be deducted)	374,990	388,660	3.0
<b>Net value-added at basic prices</b> (excluding financial intermediation services indirectly measured)	<b>11,066,752</b>	<b>11,495,782</b>	<b>89.7</b>
Net indirect taxes	1,263,302	1,317,782	10.3
<b>Gross domestic product at market prices</b>	<b>12,330,054</b>	<b>12,813,564</b>	<b>100.0</b>



Table 33

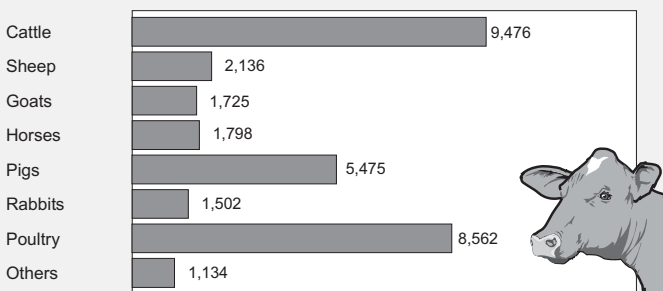
**Per capita values of some economic aggregates in South Tyrol and Italy 2002-2003**

At current prices (thousands of euro)

	South Tyrol		Italy	
	2002	2003	2002	2003
<b>Gross domestic product at market prices</b>				
per inhabitant	26,442	27,292	22,052	22,584
per full-time equivalent	53,764	55,414	52,223	53,669
<b>Income</b>				
from self-employment by employee full-time equivalent	33,033	33,982	30,510	31,655
from gross operating surplus by self-employed full-time equivalent	79,784	82,671	56,476	57,563
<b>Private consumption</b>				
Total consumption per inhabitant	17,513	18,106	13,320	13,705
of which: food	2,164	2,214	2,276	2,333
housing and related costs	4,569	4,729	3,838	4,020

Chart 6

**Agricultural holdings by livestock type 2000**



Provincial Statistics Institute - 2006/sr



Table 34

### Farm holdings and holding surface area by land use 2000

SOIL USE	Number of holdings	Surface area	
		ha	%
Arable land	3,587	3,780	0.62
Vegetable plots	10,685	220	0.04
Permanent pasture	14,011	73,663	12.08
Grazing	6,397	166,490	27.29
Permanent crops	10,053	23,261	3.81
<i>Fruit trees</i>	8,542	18,326	3.00
<i>Vines</i>	4,781	4,810	0.79
<i>Olive trees, nurseries</i>	56	126	0.02
<b>Total utilised agricultural area</b>	<b>23,280</b>	<b>267,414</b>	<b>43.84</b>
Woods	16,862	292,035	47.87
Non-utilised agricultural area	2,999	14,516	2.38
Other areas	22,838	36,029	5.91
<b>Total</b>	<b>26,285</b>	<b>609,994</b>	<b>100.00</b>

Source: Census of Agriculture

Table 35

### Farm holdings and livestock population by livestock type 2000

LIVESTOCK TYPE	Number of holdings	Livestock population	
		Number of animals	Animals per holding
Cattle	9,476	144,196	15
Sheep	2,136	39,739	19
Goats	1,725	15,714	9
Horses	1,798	4,725	3
Pigs	5,475	15,804	3
Rabbits	1,502	27,753	18
Poultry	8,562	250,863	29
Other	1,134	-	-
<i>of which: bees</i>	1,086	(a) 17,095	16

(a) Bee hives

Source: Census of Agriculture



Table 36

**Agricultural production by crop type 2003-2005**

Quantity in 100 kg

TYPE OF CROP	2003	2004	2005
<b>Agricultural production</b>			
Wheat	1,760	1,750	1,600
Rye (a)	2,130	2,250	2,250
Barley	1,750	1,750	1,750
Oats	900	900	750
Potatoes	139,500	162,000	157,500
Cauliflower	41,530	52,700	48,000
Beetroot	32,400	35,000	33,000
Cabbage	15,490	15,260	15,260
Lettuce	9,100	7,100	9,900
Radicchio	6,960	8,900	6,600
<b>Fruit and vine production</b>			
Apples	8,722,500	9,663,800	9,164,000
Pears	24,600	16,600	13,900
Wine grapes	445,200	494,800	439,000

(a) Including minor cereals

Table 37

**Wine grape harvest 2004-2005**

	2004	2005	
	Hectolitre	Hectolitre	%
Table wine	....	6,867	2.3
Table wine with geographical indication	....	8,881	2.9
DOC wine	....	289,160	94.8
<b>Total wine</b>	<b>391,000</b>	<b>304,908</b>	<b>100.0</b>
<i>of which: white wine</i>	<i>132,940</i>	<i>125,462</i>	<i>41.1</i>



Table 38

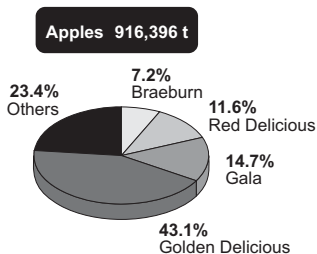
## Apple and pear harvest by variety 2004-2005

VARIETIES	2004		2005	
	Production in 100 kg		Production in 100 kg	%
<b>Apples</b>				
Golden Delicious	4,351,032		3,951,435	43.1
Gala	1,182,315		1,344,121	14.7
Red Delicious	1,158,320		1,065,911	11.6
Braeburn	774,847		658,595	7.2
Granny Smith	599,124		577,738	6.3
Fuji	317,104		423,750	4.6
Jonagold	291,172		282,741	3.1
Morgenduft	329,080		270,548	3.0
Cripps Pink	257,143		253,663	2.8
Winesap	110,319		102,019	1.1
Idared	99,124		71,111	0.8
Jonagored	65,144		53,606	0.6
Other	129,079		108,728	1.2
<b>Total</b>	<b>9,663,803</b>		<b>9,163,963</b>	<b>100.0</b>
<b>Pears</b>				
Williams	8,812		8,411	60.5
Kaiser Alexander	5,979		4,665	33.6
Other	1,783		823	5.9
<b>Total</b>	<b>16,575</b>		<b>13,899</b>	<b>100.0</b>

Chart 7

## Apple and pear harvest 2005

Percentage composition



**Pears 1,390 t**

Provincial Statistics Institute - 2006/sr



Table 39

### Forestry production by type of wood and utilisation 2003-2005

Production in m<sup>3</sup>

TYPE OF WOOD	2003	2004	2005
<b>Industrial timber</b>	<b>348,715</b>	<b>331,364</b>	<b>333,580</b>
Fir and spruce	290,962	274,406	274,976
Larch	36,008	37,261	37,724
Pine	21,538	19,281	20,614
Other coniferous wood	2	2	6
Non-coniferous wood	204	413	260
<b>Firewood</b>	<b>147,412</b>	<b>163,360</b>	<b>171,140</b>
Coniferous wood	144,451	157,310	164,532
Non-coniferous wood	2,962	6,050	6,608
<b>Total</b>	<b>496,127</b>	<b>494,724</b>	<b>504,720</b>

Table 40

### Mining production 2002-2004

Tonnes

TYPE OF PRODUCT	2002	2003	2004
Porphyry	212,140	162,423	145,816
Marble	430,229	430,907	436,921
Limestone and serpentine stone chips	8,100	5,180	4,571
Peat	75,485	63,150	66,335
Sand and gravel	1,561,497	1,957,946	2,068,653
Sandstone	-	370	250
Granite	35,948	48,364	39,339
Gneiss	850	1,360	2,970
Diorite	72,410	58,259	22,518



Table 41

### Electricity production and consumption 2004-2005

	2004	2005	
	Millions of kWh	Millions of kWh	% of Italy
<b>Production</b>	<b>4,890</b>	<b>3,991</b>	<b>1.4</b>
<i>Hydroelectric production</i>	4,835	3,934	9.3
<b>Consumption</b>	<b>2,666</b>	<b>2,786</b>	<b>0.9</b>
Agriculture	133	150	2.8
Industry	985	991	0.6
Services	1,044	1,099	1.3
Private households	504	546	0.8

Table 42

### Planning permission granted 2003-2005

	2003	2004	2005
Volume in m <sup>3</sup>			
<b>Residential buildings</b>	<b>2,106,323</b>	<b>2,270,998</b>	<b>2,661,579</b>
New buildings	1,960,573	2,040,922	2,391,261
Building extensions	145,750	230,076	270,318
<b>Non-residential buildings</b>	<b>3,507,815</b>	<b>2,953,551</b>	<b>2,683,773</b>
New buildings	2,699,623	2,004,641	1,707,372
Building extensions	808,192	948,910	976,401
Number			
<b>Housing units</b>	<b>4,118</b>	<b>4,561</b>	<b>5,021</b>
In residential buildings	3,874	4,266	4,811
In non-residential buildings	244	295	210
In new buildings	3,732	3,971	4,374
In building extensions	386	590	647



Table 43

### Public works of local administration 2003-2005

	2003	2004	2005
<b>Work started</b>			
Number	1,724	1,748	1,414
Values (1,000 euro)	757,311	1,589,369	660,971
<b>Work carried out</b>			
Number	3,113	3,521	3,240
Values (1,000 euro)	692,886	900,663	757,612

Table 44

### Retail trade permits according to type of permit 1997-1998

	1997	1998
<b>Fixed site</b>	<b>7,158</b>	<b>7,176</b>
Food	1,818	1,815
Textiles	1,336	1,351
Furniture	761	776
Miscellaneous	3,243	3,234
<b>Street trader</b>	<b>1,057</b>	<b>1,051</b>
Food	378	375
Non food	679	676





Table 45

### Accommodation capacity, arrivals and overnight stays 2003-2005

	2003	2004	2005
<b>Accommodation facilities (a)</b>			
Hotels	4,414	4,417	4,383
Non hotels (a)	5,687	5,746	5,816
<b>Total</b>	<b>10,101</b>	<b>10,163</b>	<b>10,199</b>
<b>Beds (a)</b>			
Hotels	146,640	147,721	148,156
Non hotels (a)	65,143	65,832	66,447
<b>Total</b>	<b>211,783</b>	<b>213,553</b>	<b>214,603</b>
<b>Arrivals (1,000)</b>			
Hotels	3,889	3,942	4,082
Non hotels (a)	770	774	819
<b>Total</b>	<b>4,659</b>	<b>4,717</b>	<b>4,902</b>
<i>of which foreigners</i>	2,884	2,951	3,023
<b>Overnight stays (1,000)</b>			
Hotels	20,716	20,759	21,077
Non hotels (a)	4,961	4,939	5,074
<b>Total</b>	<b>25,677</b>	<b>25,698</b>	<b>26,151</b>
<i>of which foreigners</i>	16,371	16,426	16,592
<b>Average length of stay (days)</b>			
Hotels	5.3	5.3	5.2
Non hotels (a)	6.4	6.4	6.2
<b>Total</b>	<b>5.5</b>	<b>5.4</b>	<b>5.3</b>
<i>of which foreigners</i>	5.7	5.6	5.5
<b>Utilisation of beds (days)</b>			
Hotels	141.3	140.5	142.3

(a) Private lets, youth hostels, campsites, holiday resorts, holiday flats, mountain huts and others



Table 46

**Traffic network 2005**

RAILWAYS AND ROADS		Length in km
<b>Railways</b>		<b>297</b>
<b>Roads</b>		
Motorways		130
State roads		869
Provincial roads		1,218
Municipal roads		2,441
Rural roads		3,446

Table 47

**Vehicles liable to road tax 2005**

TYPE OF VEHICLE	Number	Per 100 inhabitants		
		South Tyrol	Province of Trento	Italy
Cars	248,109	51.7	56.5	59.2
Lorries	33,337	6.9	8.3	7.1
Other trucks	2,554	0.5	0.8	0.4
Motorcycles (a)	35,105	7.3	8.8	9.0
Trailers	9,619	2.0	2.2	1.4

(a) Excluding mopeds



Table 48

### Road accidents and people injured 2002-2004

	2002	2003	2004
<b>Accidents</b>	<b>2,060</b>	<b>1,716</b>	<b>1,645</b>
Between 2 or more vehicles	1,489	1,250	1,168
Between vehicles and pedestrians	150	115	147
Single vehicles	421	351	330
<b>People injured</b>	<b>2,754</b>	<b>2,241</b>	<b>2,201</b>
Injuries	2,665	2,176	2,139
Deaths	89	65	62
<b>Accidents per 100 vehicles</b>			
South Tyrol	6.5	5.3	5.1
Province of Trento	4.8	4.4	4.1
Italy	5.5	5.3	5.1

Table 49

### Cableways by category 2003-2005

TYPE OF CABLEWAY	2003	2004	2005
Automatic telecabins	95	98	106
Cable cars	22	23	23
Chair lifts, gondulas, cabin lifts	105	106	104
Ski lifts	153	149	139
Other	2	3	3
<b>Total</b>	<b>377</b>	<b>379</b>	<b>375</b>



Table 50

**Telephone connections and television licences**

	Number	South Tyrol	Prov. of Trento	Italy
Per 100 inhabitants				
<b>Telephones (1999)</b>				
Connections	219,438	47.9	51.0	45.4
Per 100 households				
<b>Television (2004)</b>				
Licences	136,310	76.0	75.8	72.6

Table 51

**Deposits, loans and banking counters 2003-2005**

Values in thousands of euro

	2003	2004	2005
<b>Deposits</b>	<b>7,017</b>	<b>7,337</b>	<b>7,620</b>
At banks			
National banks	353	317	297
Regional banks	381	435	356
Interprovincial banks	1,231	1,276	1,308
Provincial banks	4,961	5,166	5,585
<i>of which local</i>	<i>2,108</i>	<i>2,187</i>	<i>2,305</i>
<b>Loans</b>	<b>14,222</b>	<b>15,903</b>	<b>15,833</b>
<b>Bank counters</b>	<b>408</b>	<b>407</b>	<b>408</b>
Municipalities with banking counters	111	111	111



Table 52

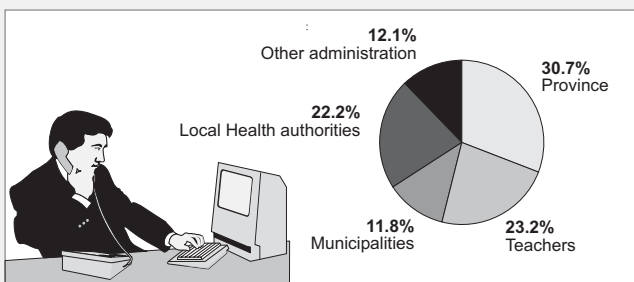
**Civil servants by administration 2004-2005**

ADMINISTRATION	2004	2005
<b>Government</b>		
Ministries	5,250	5,258
Social insurance institutions	398	389
ACI (Italian Automobile Association)	24	23
Railway company	863	834
Post office	1,158	1,135
<b>Local administration (a)</b>		
Regional administration and Regional Parliament	76	78
Provincial administration and Provincial Parliament	9,438	10,031
Independent provincial administrations	205	206
Teachers	7,414	7,572
Local Health Authorities	7,191	7,273
Municipalities	4,051	3,855
Public assistance institutions	1,422	1,469
Districts (b)	1,975	2,052
Other local administrations	152	166

(a) Local administration employees are expressed in full-time equivalents

(b) Including Independent Social Services Dept. of Bozen/Bolzano

Chart 8

**Local administration civil servants (a) 2005**

(a) Local administration employees are expressed in full-time equivalents

Provincial Statistics Institute - 2006/sr



Table 53

### Consolidated expenditure of local public administration by functional classification 2003-2004

Cash expenditure in thousands of euro

	2003	2004	% change
General administration	590,645	617,815	+4.6
Defence, public security and justice	65,249	72,828	+11.6
Education, culture, sports and leisure	1,132,350	1,157,417	+2.2
Building and urbanism	452,418	340,735	-24.7
Health care	1,077,235	1,096,565	+1.8
Social assistance	293,661	296,635	+1.0
Other social measures	17,614	21,288	+20.9
Public transport	324,989	129,324	-60.2
Roads	314,086	302,524	-3.7
Agriculture	205,609	207,253	+0.8
Energy, mining, industry	313,189	441,708	+41.0
Handicrafts	71,238	58,652	-17.7
Tourism	67,429	60,165	-10.8
Trade	23,645	23,113	-2.2
Other economic measures	71,042	75,782	+6.7
Waste and sewage disposal	173,203	183,507	+5.9
Environmental care	38,722	39,883	+3.0
Other public construction	45,327	49,442	+9.1
Other non assignable expenditure	70,050	79,673	+13.7
<b>Total</b>	<b>5,347,701</b>	<b>5,254,309</b>	<b>-1.7</b>



Table 54

**Declared bankruptcies by activity sector 2003-2005**

ACTIVITY SECTOR	2003	2004	2005
Manufacturing	4	10	6
Building	10	12	22
Trade	19	21	37
Hotels and catering	14	12	20
Other services	7	14	16
<b>Total</b>	<b>54</b>	<b>69</b>	<b>101</b>
<i>of which: companies</i>	52	64	92

Table 55

**Protests 2004-2005**

	Number		Total (thousands of euro)	
	2004	2005	2004	2005
Bills of exchange	2,661	2,806	3,938	3,936
Drafts	168	204	257	391
Cheques	427	331	3,018	2,195
<b>Total</b>	<b>3,256</b>	<b>3,341</b>	<b>7,213</b>	<b>6,524</b>
per 1,000 inhabitants				
South Tyrol	7	7	15	14
Italy	29	28	67	68

Table 56

**Reported crimes leading to prosecution 2003**

TYPE OF CRIME	Number	%
Against the person	1,406	9.5
Against the family and public morals	142	1.0
Against property	11,065	75.1
Against economic order	845	5.7
Other crimes	1,285	8.7
<b>Total</b>	<b>14,743</b>	<b>100.0</b>
<i>of which: by unknown offenders</i>	10,803	73.3